

# EXCEPTIONAL SOUNDPROOFING SOLUTION

Basement Rentals, Condos & Townhomes

Exceptional Soundproofing

**REFLEXOR**  
Noise STOP Technology™

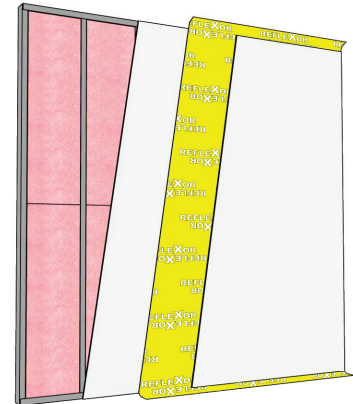


## 1 WALLS AND CEILING

Staple the RefleXor to the first row of drywall using T50 staples. Overlap the RefleXor seams by approximately 1" and overlap the RefleXor on the ceiling and floor approximately 4" as well as at all the junctions of the room.

## 2 WALLS AND CEILING

Install 2nd row of drywall starting from the ceiling and finishing with the walls, according to the manufacturer's specifications.



### CORRECTIVE SOLUTION

**Add** Reflexor

1.7 mm (1/16")

**Add** Drywall

15.86 mm (5/8")

**STC 52**

**Intertek**