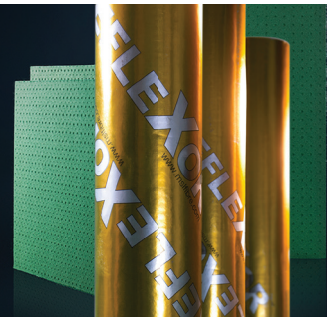


EXCEPTIONAL SOUNDPROOFING SOLUTION

New Construction

Extreme Soundproofing

**SONOPAN
+REFLEXOR**
Noise STOP Technology™

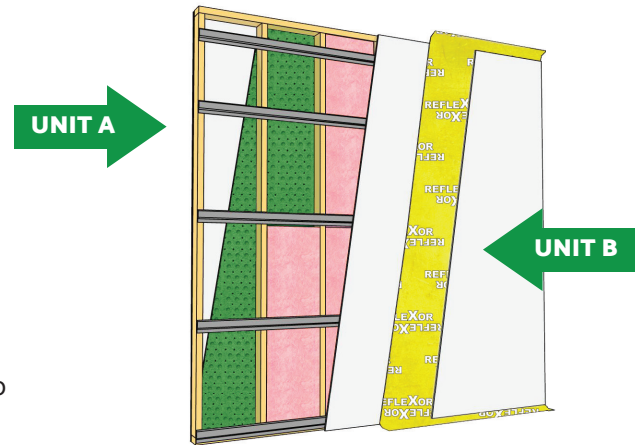


UNIT A

- 1** Fasten SONOPan II to joists using drywall screws with washers, 12" o/c (12" apart at the perimeter and center of the panel).
- 2** Fasten 5/8" drywall according to the manufacturer's specifications.

UNIT B

- 3** Install fibreglass insulation between studs as per manufacturer's specifications.
- 4** Fasten the resilient channels to the studs every 24" and according to the manufacturer's specifications.
 1. Fasten the first channel 2" from the ground
 2. Fasten the second channel 24" from the floor
 3. Fasten the last channel 6" from the ceiling
- 5** Fasten 5/8" drywall to the resilient channels using drywall screws according to the manufacturer's specifications.
- 6** Staple the RefleXor to the first row of drywall using T50 staples. Overlap the RefleXor seams by approximately 1" and overlap the RefleXor on the ceiling and floor approximately 4" as well as at all the junctions of the room.
- 7** Install second row of drywall according to the manufacturer's specifications.



STC 55

Gypsum type X	15.86 mm (5/8")
Reflexor	1.7 mm (1/16")
Gypsum type X	15.86 mm (5/8")
Resilient channels	12.7 mm (1/2")
	at 406 mm o.c.
Fibreglass insulation	88.9 mm (3 1/2")
Wood stud	38 x 89 mm (1 1/2" x 3 1/2")
SONOPan II	19 mm (3/4")
Gypsum type X	15.86 mm (5/8")

1 hour Fire rating - CAN/ULC S101 - ANSI UL 263
 UL Designs: U309, U314, U423, U425, U465
 ULC Designs: W301, W415, W453